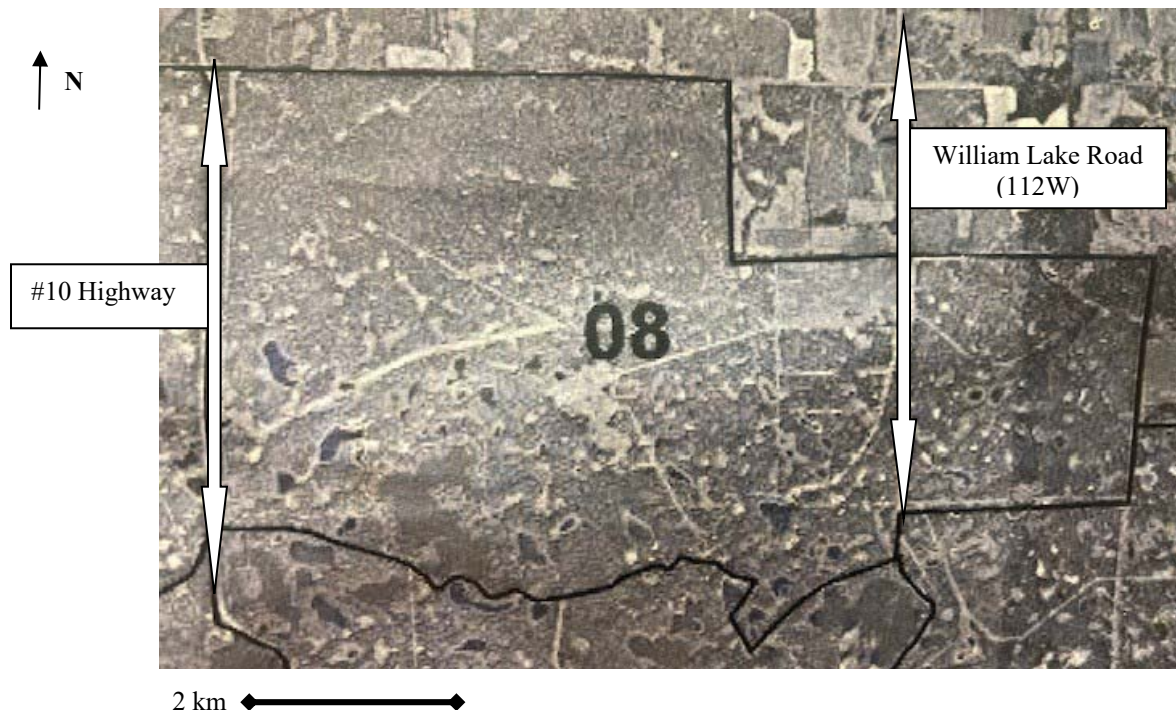




PUBLIC NOTICE

IN THE MATTER OF: REGISTERED TRAPLINE NO. 8 TURTLE MOUNTAIN REGISTERED TRAPLINE SECTION SOUTHERN RTL DISTRICT

Turtle Mountain Registered Trapline No. 8, as labelled in the map below, based on Manitoba Director of Surveys Plan No. 18363c



Public notice is hereby given that any qualified Manitoba resident wishing to apply for a permit to operate this line must make an application to the office of Manitoba Economic Development, Investment, Trade and Natural Resources at Boissevain, Manitoba

Note: The highest scoring applicant may not necessarily receive the line.

POSTED: The 1st day of June, 2024

Applications for this trapline must be submitted by July 31st, 2024

Application forms are available from the Manitoba Economic Development, Investment, Trade and Natural Resources Office in Boissevain at 451 North Railway Street.

Office hours: Monday – Friday 8:30 am to 4:30 pm. Closed from 12:00 pm to 1:00 pm.

RTL's in the Turtle Mountain Registered Trapping Area have a minimum annual quota of 25 beaver.

All applications must be submitted to Manitoba Economic Development, Investment, Trade and Natural Resources - Boissevain District Office by July 31st, 2024 at 4:30 pm.

Manitoba Economic Development, Investment, Trade and Natural Resources
Box 820
Boissevain, Manitoba
R0K 0E0
District Office: (204) 534-2028
Fax: (204) 534-6858